

Instructions

The pages of this unit are designed to be 3-hole punched and placed into a 3-ring view binder. The binder will house (A) a set of page dividers that has at least 8 tabs, (B) the pages of this unit and (C) the MIW instructional materials and sheet music that you download and print.

The general plan for keeping track of your musical units is as follows. As you print new units of music and instruction, you place them in the completed binder. The study units for beginning piano students go into the first tabbed section, Tab 1 - Keyboard Studies. The other units go into tabbed Sections 2 thru 8, according to their contents.

Needing More Space. When you have filled the binder and have no room for more units, you can split the library into 2 binders by moving complete sections to the second binder according to the space available in the 2 binders. Further splits can be made in the same manner, when space is needed. When you split into 2 binders, you will probably want to move entire sections rather than splitting one of the sections.

Assembling the Binder. 1. - Assemble the binder by inserting the cover page into the front cover of the view binder, and the back cover page into the back cover. 2. - Insert the 8 tab dividers into the binder. 3. - Place the "Library Contents" page in front of the set of tab dividers. 4. - Place each of the 8 section contents pages behind its corresponding tab divider. This completes the assembly of the binder. 5. Insert the pages that you download from the site into the binder according to their content.

Printing and Materials. These instructions assume that you are printing this unit on both sides of the page, just as you should do for all of our materials. You will need a 3-ring view binder and a 3-hole punch so that you can insert the pages into the binder. You will also need a set of 8-tab dividers. This present Unit provides front and back covers, these instructions, and the contents pages.

Page is Blank

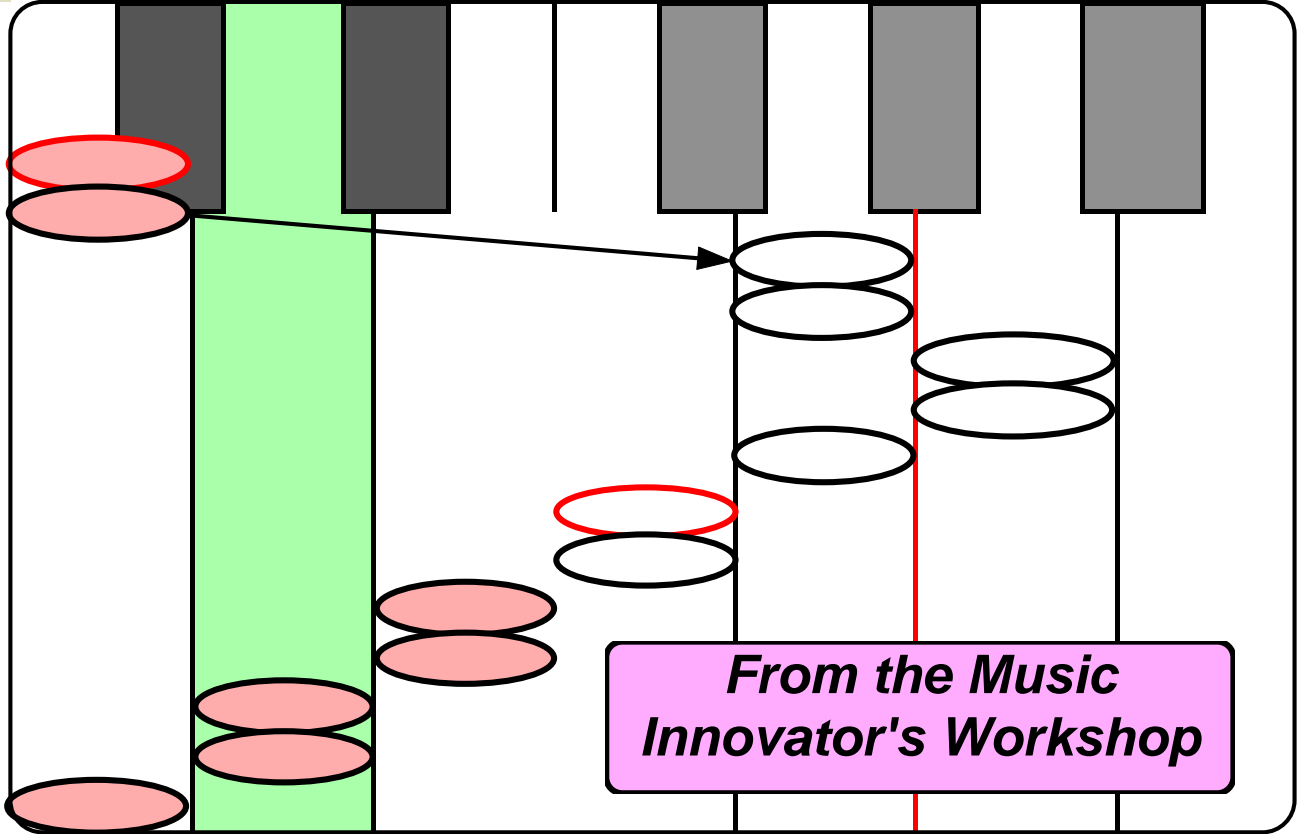
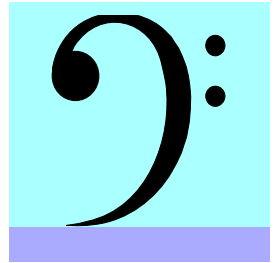
Insert in the Front Cover of your main View-Binder

1904-03

Piano Studies and Repertoire

by John M. Honeycutt

This Book Belongs To:



*From the Music
Innovator's Workshop*

Page is back side of cover.

Place as the first page in your binder - IN FRONT OF TAB 1.

The MIW Piano Music Library

Library Contents

Tab 1 - Keyboard Studies

Tab 2 - Numbered Collections

Tab 3 - Other Collections

Tab 4 - Pieces

Tab 5 - Christmas Music

Tab 6 - PG Studies

Tab 7 - RT Music

Tab 8 - Other Pages

***From the Music
Innovators Workshop***

**File these units following Tabs
1 and 2**

**Basic Keyboard Skills
Core Instructional Units and Collectons**

		Starter Set - Basic Keyboard Skills - Tab 1
Pages		
	20	<i>PK-00 Intro to Key Diagram and Map Pitch Notation</i>
	24	<i>PK-05 MIW Piano Music Library Organizer</i>
	22	<i>PK-10 Intro to the Musical Keyboard, incl. Kbd. Labels</i>
	30	<i>PK-15 Themes From Children's Songs - Prep.</i>
		Instructions and Exercises - Tab 1
	16	<i>PK-25 Basic Keyboard Skills - Focus: Patterns</i>
	24	<i>PK-30 Basic Keyboard Skills - Focus: Movements</i>
	24	<i>PK-35 Basic Keyboard Skills - Focus: Rhythm</i>
	16	<i>PK-45 Basic Keyboard Skills - Schmitt 5-Finger Exercises</i>
	10	<i>PK-50 Basic Keyboard Skills - Two Octave Major Scales</i>
		Song Collections - Tab 2
	20	<i>PK-58 My First Song Collection - Part 1</i>
	36	<i>PK-62 My First Song Collection - Part 2</i>
	22	<i>PK-65 My First Song Collection - Part 3</i>
	22	<i>PK-72 Traditional Christmas Carols - 1 & 2 Hand Melodies</i>
	16	<i>PK-75 Traditional Christmas Carols - 2 Voice</i>
	24	<i>PK-90 Great Symphonic Themes - Focus: Great Classics</i>

326

*Check a box in Column 1 when you receive a Unit. Check the box in
Column 2 when you have finished studying the Unit.*

Place after the Tab 1 divider.

The MIW Piano Music Library

Keyboard Studies

Tab 1 - Keyboard Studies

Tab 2 - Numbered Collections

Tab 3 - Other Collections

Tab 4 - Pieces

Tab 5 - Christmas Music

Tab 6 - PG Studies

Tab 7 - RT Music

Tab 8 - Other Pages

***From the Music
Innovators Workshop***

Tab 1 - Keyboard Studies

This section of the binder is for your keyboard instructional materials. This includes instructions and exercises.

Place after the Tab 2 divider.

The MIW Piano Music Library

Numbered Collections

Tab 1 - Keyboard Studies

Tab 2 - Numbered Collections

Tab 3 - Other Collections

Tab 4 - Pieces

Tab 5 - Christmas Music

Tab 6 - PG Studies

Tab 7 - RT Music

Tab 8 - Other Pages

***From the Music
Innovators Workshop***

Tab 2 - Numbered Collections

Tab 2 is for collections of pieces included in our instructional series.

The MIW Piano Music Library

Other Collections

Tab 1 - Keyboard Studies

Tab 2 - Numbered Collections

Tab 3 - Other Collections

Tab 4 - Pieces

Tab 5 - Christmas Music

Tab 6 - PG Studies

Tab 7 - RT Music

Tab 8 - Other Pages

***From the Music
Innovators Workshop***

Tab 3 - Other Collections

Tab 3 is for your collections of repertoire pieces. A "collection" contains more than one single piece. usually, several pieces. (The collections in this section are NOT the collections included with your instructional materials, which are placed under Tab 2.)

The MIW Piano Music Library

Pieces

Tab 1 - Keyboard Studies

Tab 2 - Numbered Collections

Tab 3 - Other Collections

Tab 4 - Pieces

Tab 5 - Christmas Music

Tab 6 - PG Studies

Tab 7 - RT Music

Tab 8 - Other Pages

***From the Music
Innovators Workshop***

Tab 4 - Pieces

Tab 4 is for the single pieces of your keyboard repertoire.

The MIW Piano Music Library

Christmas Music

Tab 1 - Keyboard Studies

Tab 2 - Numbered Collections

Tab 3 - Other Collections

Tab 4 - Pieces

Tab 5 - Christmas Music

Tab 6 - PG Studies

Tab 7 - RT Music

Tab 8 - Other Pages

***From the Music
Innovators Workshop***

Tab 5 - Christmas Music

The MIW Piano Music Library

Grand Staff Prep Studies

Tab 1 - Keyboard Studies

Tab 2 - Numbered Collections

Tab 3 - Other Collections

Tab 4 - Pieces

Tab 5 - Christmas Music

Tab 6 - PG Studies

Tab 7 - RT Music

Tab 8 - Other Pages

***From the Music
Innovators Workshop***

Tab 6 - PG Studies

This is a place to put your grand staff studies, those marked with PG prefix (Prep, Grand Staff).

The MIW Piano Music Library

Grand Staff on a Timeline

Tab 1 - Keyboard Studies

Tab 2 - Numbered Collections

Tab 3 - Other Collections

Tab 4 - Pieces

Tab 5 - Christmas Music

Tab 6 - PG Studies

Tab 7 - RT Music

Tab 8 - Other Pages

***From the Music
Innovators Workshop***

Tab 7 - RT Music

Tab 7 is a place for music notated on the Grand Staff (RT - Grand Staff Reader's version on a Timeline)

The MIW Piano Music Library

Other Pages

Tab 1 - Keyboard Studies

Tab 2 - Numbered Collections

Tab 3 - Other Collections

Tab 4 - Pieces

Tab 5 - Christmas Music

Tab 6 - PG Studies

Tab 7 - RT Music

Tab 8 - Other Pages

***From the Music
Innovators Workshop***

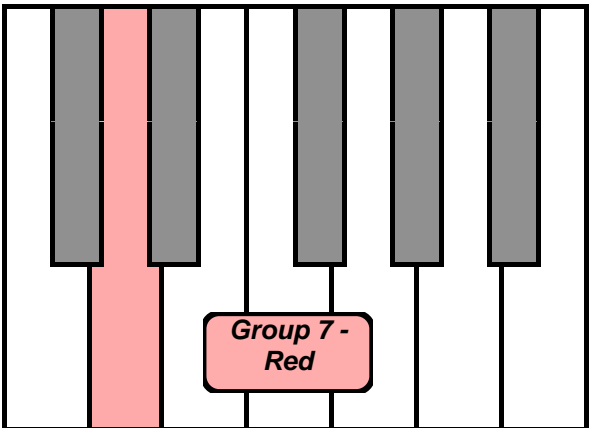
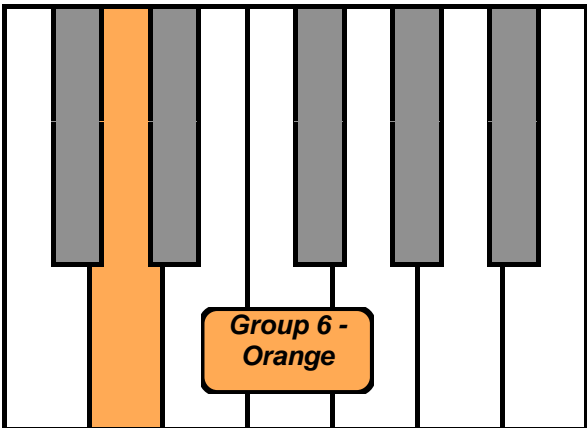
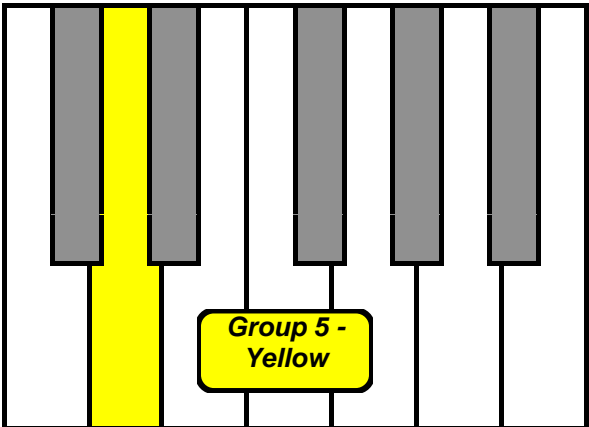
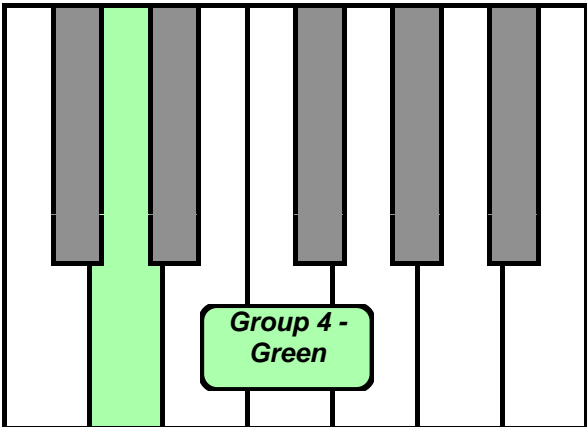
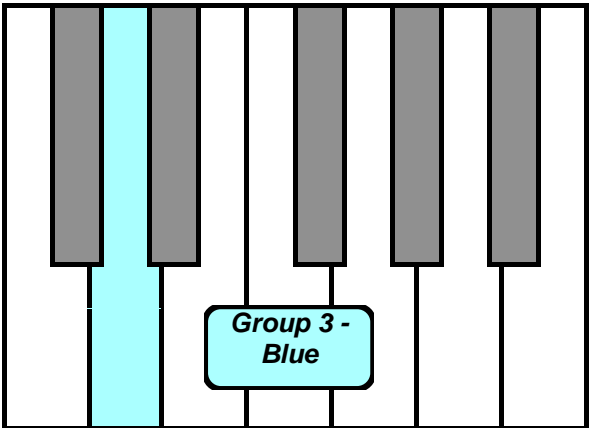
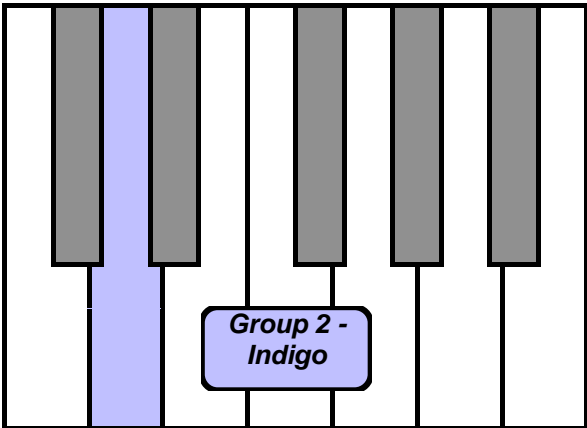
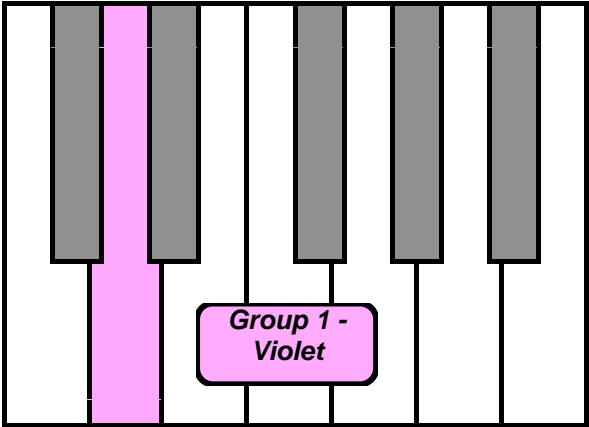
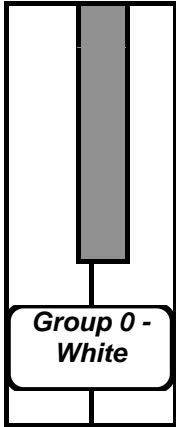
Tab 8 - Other Pages

Tab 8 is for pages that you want to keep in this binder that don't fit into any of the categories in the other Tabs.

Back side of back cover

Insert in Binder Back Cover

**The 7 Identical
Octave Groups
of the Piano
Keyboard**



H
i
g
h
e
s
t
K
e
y